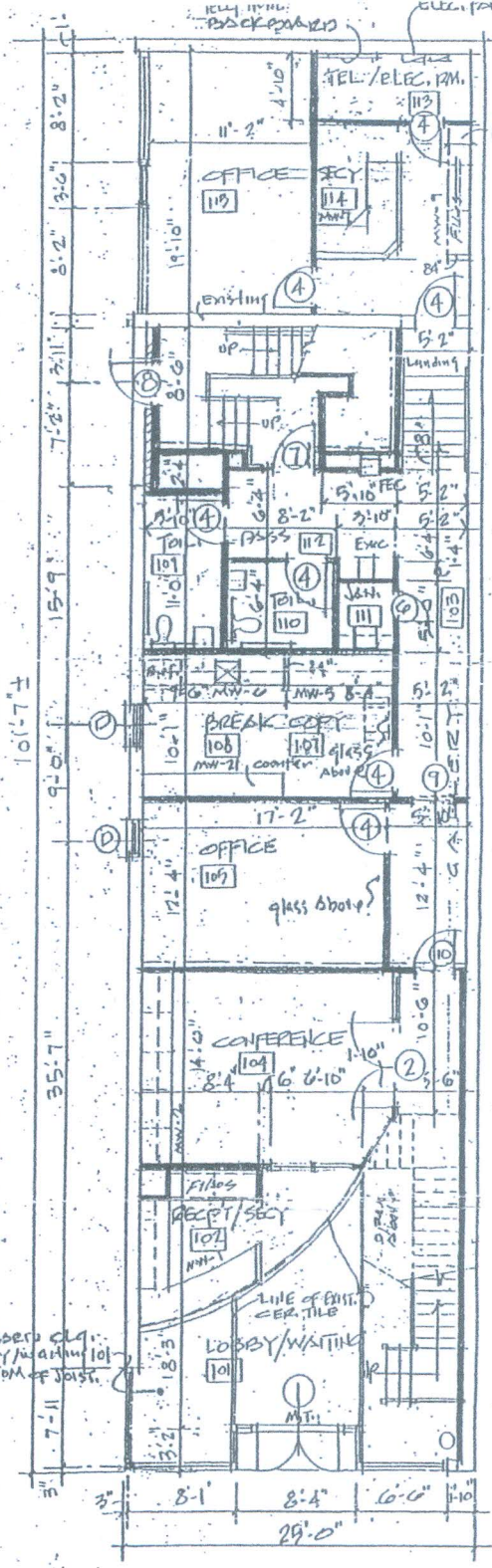


**SECOND FLOOR**  
SCALE: 1/8" = 1'-0"



**FIRST FLOOR**  
SCALE: 1/8" = 1'-0"

LOBBY OFFICES FOR  
**GULAS & STUCKEY P.C.**  
2031 SECOND AV. NORTH  
BIRMINGHAM, ALABAMA  
— SUPPLEMENTARY DWG. A-107



2210 SECOND AVENUE NORTH  
BIRMINGHAM, AL 35203  
PHONE 205-324-8866  
FAX 205-324-8878