

For Lease

Outstanding Historic Building on Restaurant Row

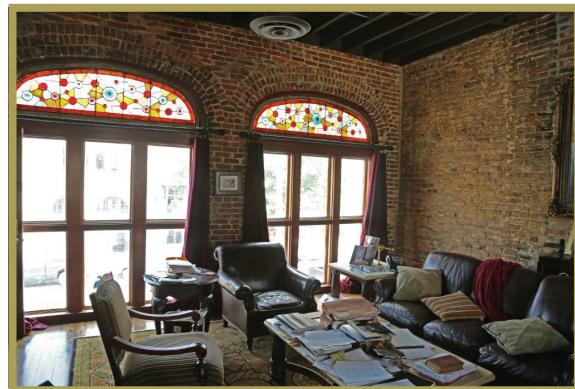
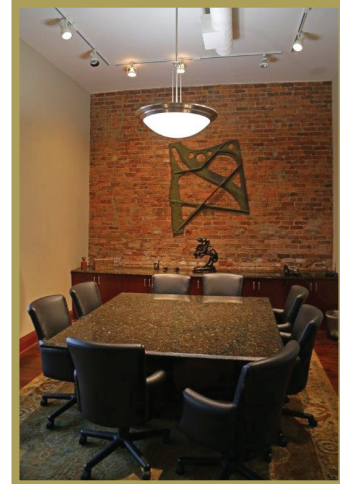
The Dewberry Drug Building

2031 North Second Avenue
Birmingham, Alabama

This two-story office building sits on the southwest corner of Richard Arrington, Jr. Blvd. and 2nd Avenue N., in the center of the downtown business district. It has an inviting foyer with a built-in receptionist desk, six offices of varying size, a conference room and much more. Features include hardwood floors, exposed brick and windows in all of the offices. There is ample parking in the city deck across the street and all the conveniences of the city center.

- 6 offices total (2 executive offices)
- Reception/waiting area
- Conference room
- Break/copy room
- Back secretarial area/file room
- Secretary/paralegal room
- 3 sectioned cubical secretary/paralegal areas
- Small coffee bar with printer
- Restrooms- 4 (2 per floor)
- 6000 sq. ft. (\$17.00 per sq.ft. net)

Lease at \$17.00 per sq. ft.
(price negotiable for entire building)



For more information contact

JOSEPH MCCLURE
Jmcre
COMMERCIAL REAL ESTATE

205 326 0020

joey@jmcre.net

jmcre.net