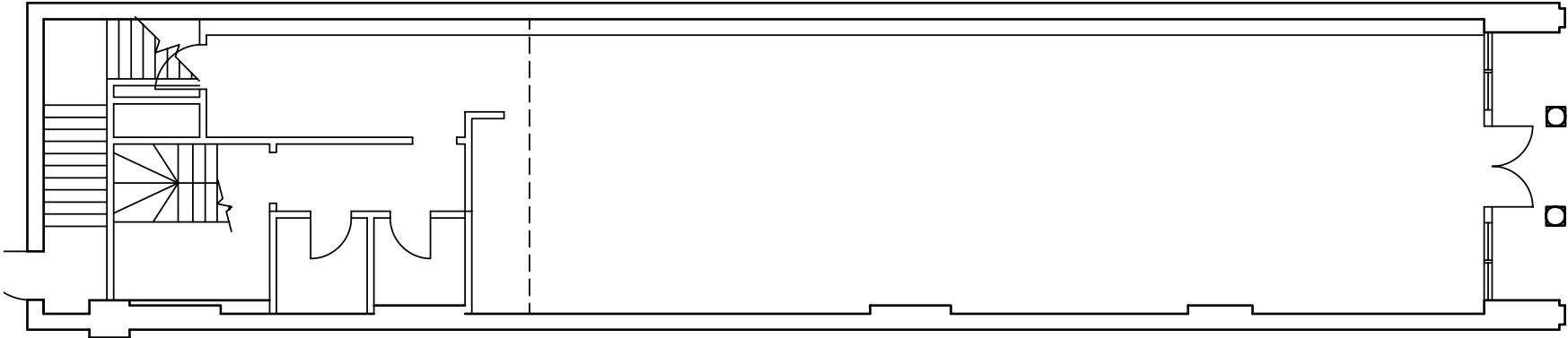


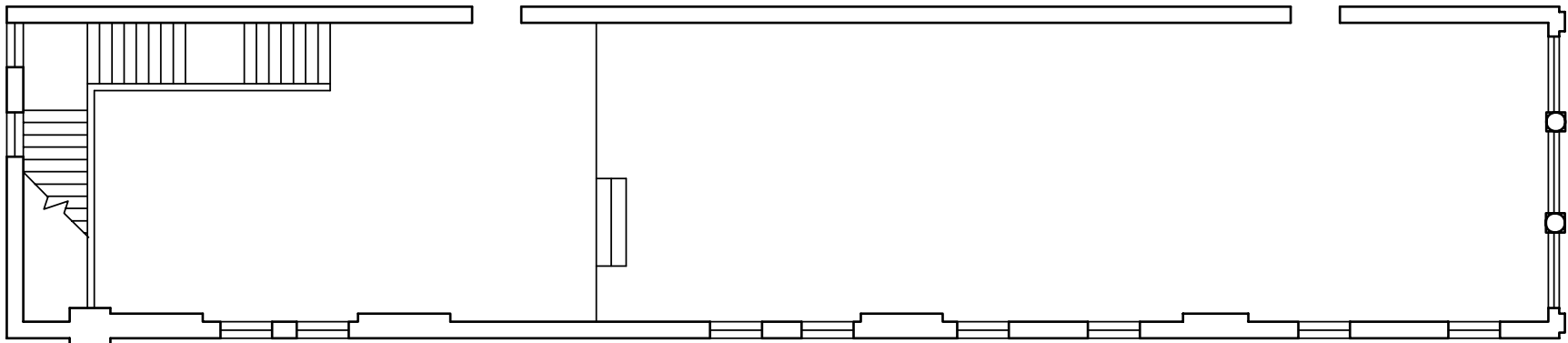
LCS DESIGNS  
208 North 20th Street  
Birmingham, AL 35203  
P: 205.458.0007  
F: 205.326.8896

Lisa Sheppard  
AL Registration #245



# 01 1st FLOOR PLAN

SCALE: 3/16" = 1'-0"



# 02 MEZZANINE PLAN

SCALE: 3/16" = 1'-0"

212 20th Street North  
Birmingham, Alabama

Floor Plan

Date: 4/13/07

1ST FL 1,627 SF  
MEZZ 639 SF

Project No: ---